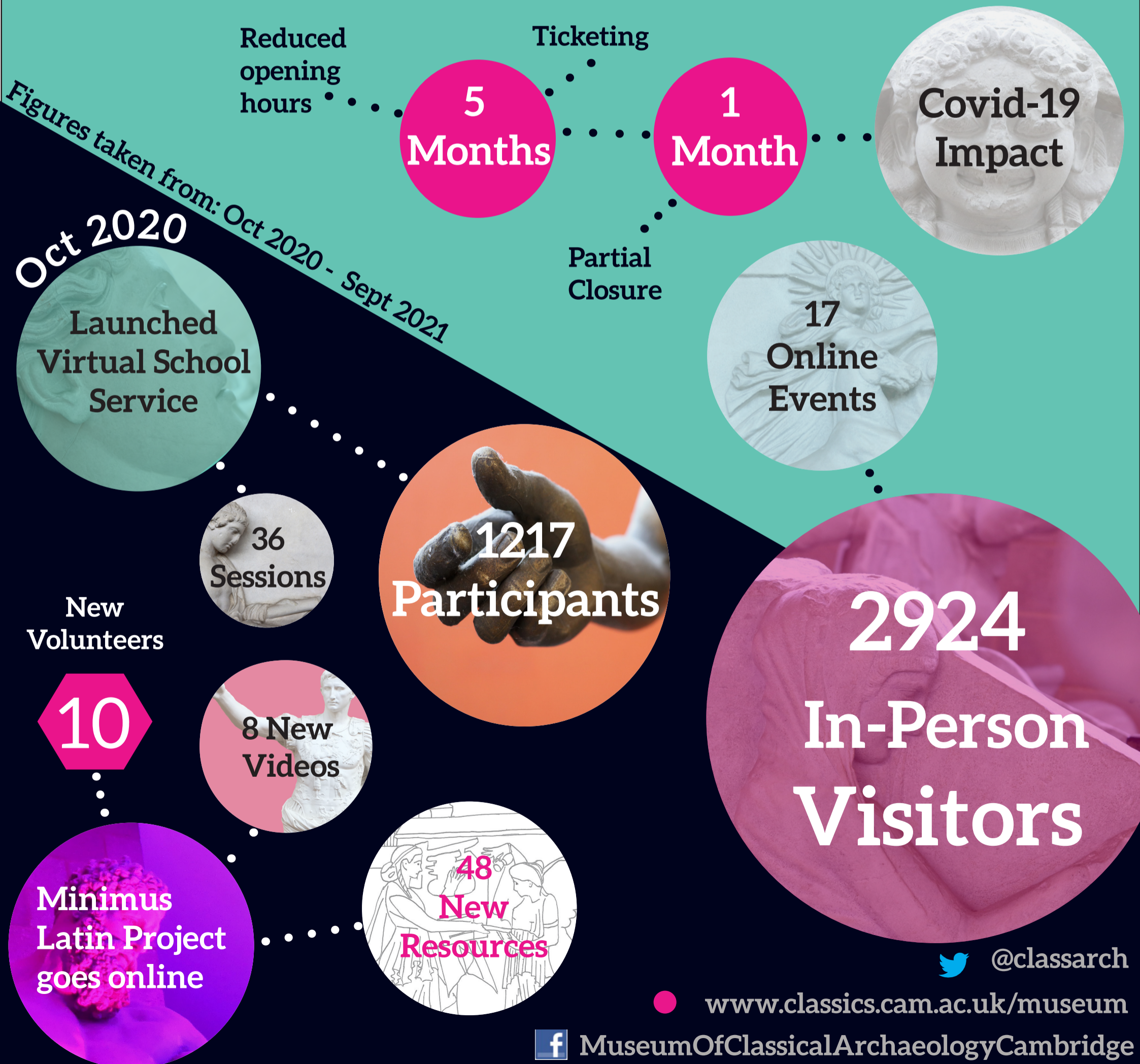


Annual Report

This has been another year of reopenings and closures for the Museum of Classical Archaeology, due to the pandemic. We pivoted to online delivery of both events and schools learning. From the start of October 2021, we were finally able to return to pre-pandemic opening hours. We have now removed the need to book tickets and are happy to be welcoming school groups through our doors once again.



Exhibitions & Displays



Illustrating The Ancient World



A Twist of The Hand



New Acquisitions
22
Derbyshire Schools Learning Service



15,000 Objects

Equality & Diversity



Beyond The Pale Trail



Wield your phone.
6 QR Codes



Bassae Frieze Rehang
18 Panels
63 New Brackets



Casts Restored
1



Conservation
1 Student Conservator
1 UCM Conservator



Development Period



6 Student Volunteers



Sharing LGBTQ+ Voices



550 Catalogue records updated



3 Staff

Remote Work Experience placements



1 Paid Collections Intern



4 Remote Work Experience placements



300 Hours spent volunteering
24 Volunteers



24 Volunteers



New Director: Professor Caroline Vout



Supported using public funding by
ARTS COUNCIL ENGLAND



UNIVERSITY OF CAMBRIDGE
MUSEUMS & BOTANIC GARDEN